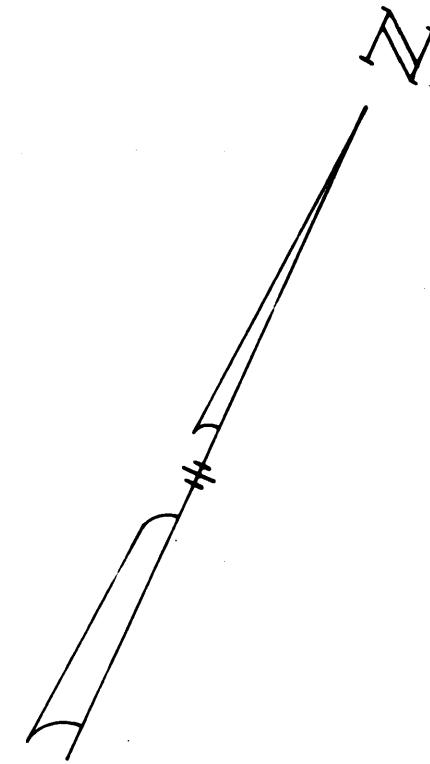


PILOT'S COVE

A SUBDIVISION GOMEZ GRANT MARTIN COUNTY, FLORIDA

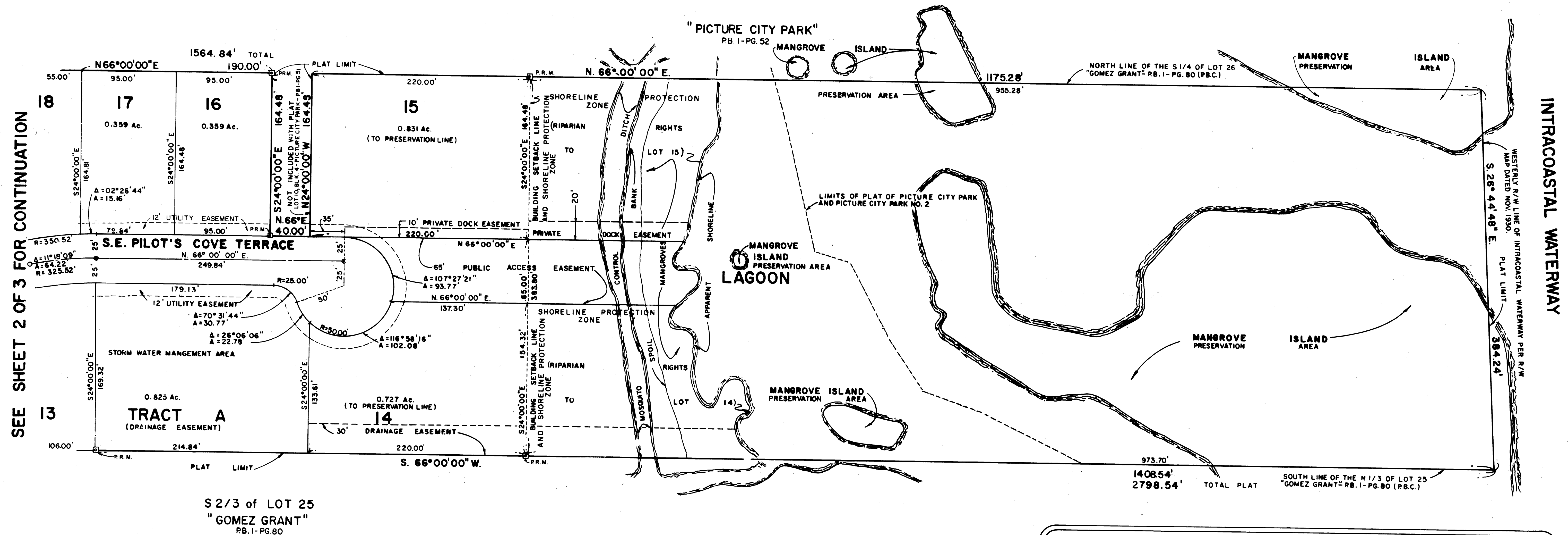
BEING A REPLAT OF A PORTION OF PICTURE CITY PARK AS RECORDED IN PLAT BOOK 1, PAGE 51; ALSO A REPLAT OF PICTURE CITY PARK NO. 2 AS RECORDED IN PLAT BOOK 1, PAGE 52, PUBLIC RECORDS, MARTIN COUNTY, FLORIDA.



Sheet 3 of 3

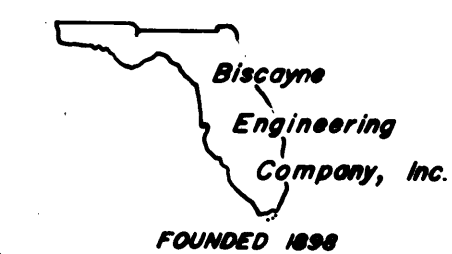
CLERK'S RECORDING CERTIFICATE
I, LOUISE V. ISSACS, Clerk of the Circuit Court of Martin County, Florida, hereby certify that this plat was filed for record in Plat Book 9, Page 76, Martin County, Florida, public records, this day of 1984.
Louise V. Issacs, Clerk
Circuit Court
Martin County, Florida
File No. _____ By: _____
Deputy Clerk

MAY 1983



SEE SHEET 2 OF 3 FOR CONTINUATION

S 2/3 of LOT 25
"GOMEZ GRANT"
PB. 1 - PG. 80



BISCAYNE ENGINEERING COMPANY, INC.
Consulting Engineers · Planners · Surveyors